

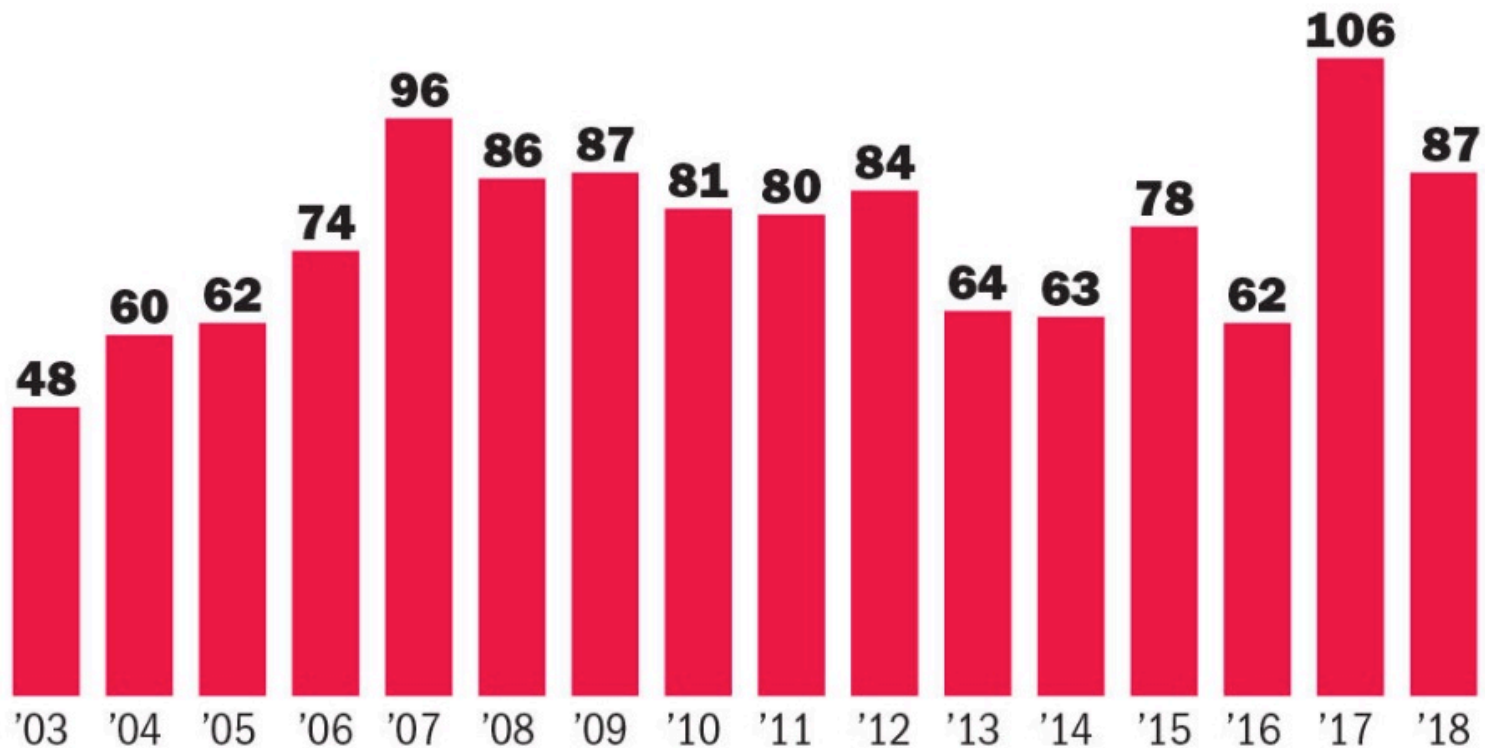
Crime

2017+18 Homicides - Highest 2 Yr Total On Record

Sources: The Advocate (1.5.2019)

Baton Rouge homicides, 2003-18

The number of homicides in East Baton Rouge Parish in 2018 fell from the previous year's record high, but remained near the top of historic counts

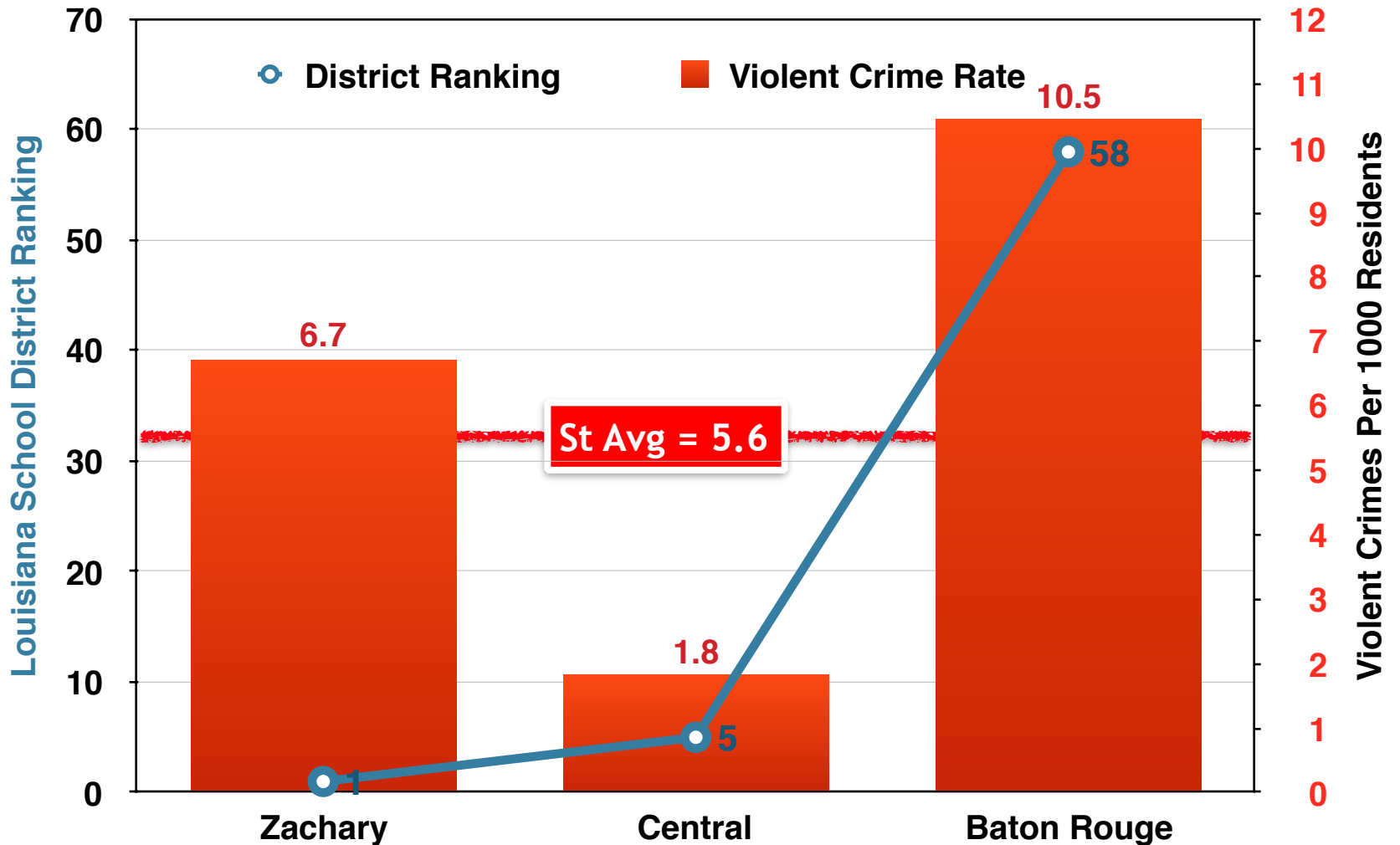


Prepa Source: Advocate records, FBI, local law enforcement

Advocate graphic

2018 EBR Parish City Comparison

Sources: LouisianaBelieves.com, NeighborhoodScout.com



TAXES

23 New Taxes Since 2003

Source: BRGov.Com

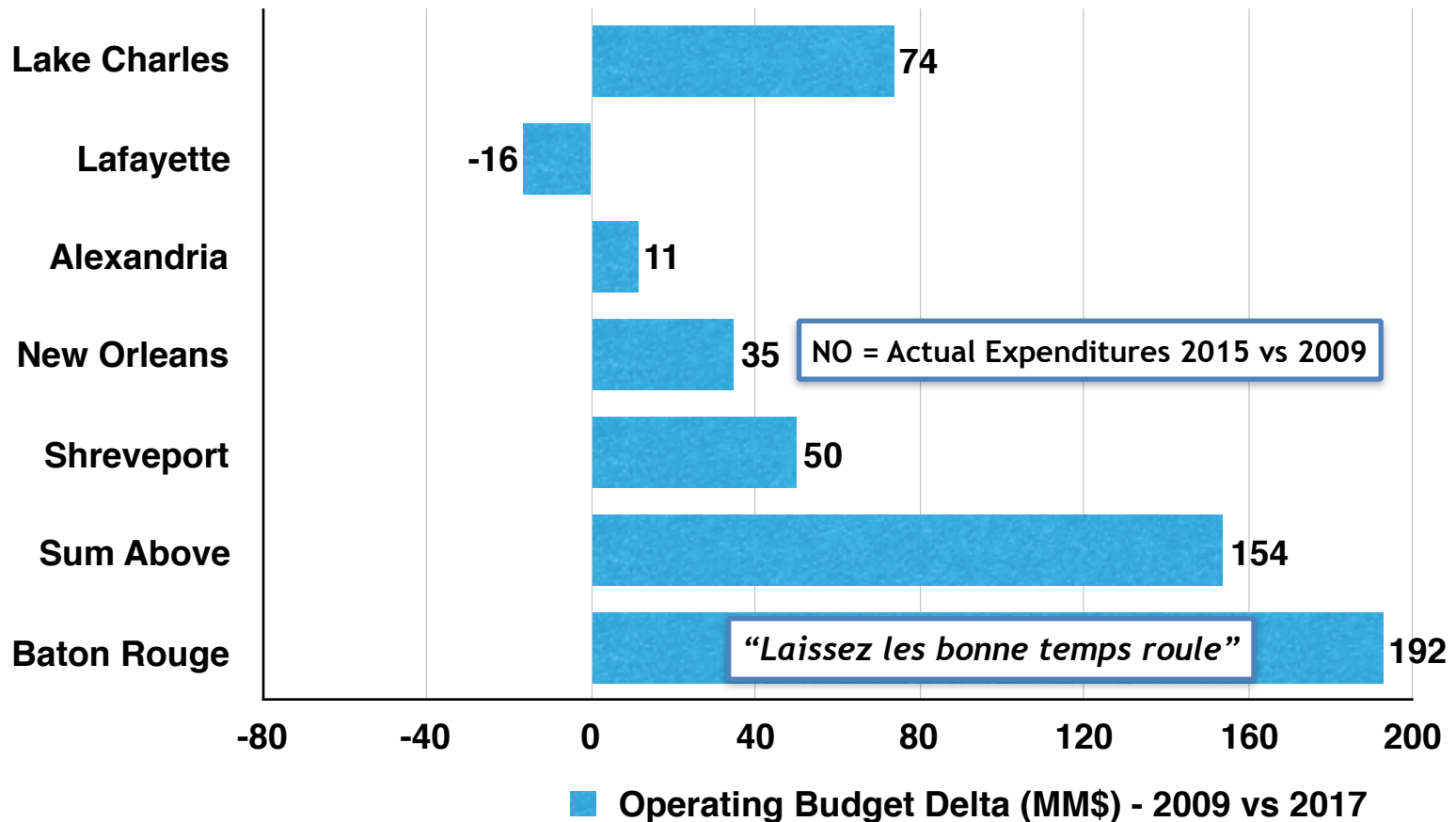
<i>Civil Juror Compensation</i>	<i>Fire Protection District No. 1</i>	<i>Parish Transport Beautification</i>
<i>Criminal Juror Compensation</i>	<i>Downtown Develop District</i>	<i>Cyntreniks Group/King Hotel Spec</i>
<i>City Court Judicial Building</i>	<i>Capitol House Economic Develop</i>	<i>Bluebonnet Convention Hotel Tax</i>
<i>Council on Aging</i>	<i>Lafayette-Main Economic Develop</i>	<i>EBRATS Bldg Special Taxing</i>
<i>City Court Sobriety Court</i>	<i>Dawnadele Economic Develop</i>	<i>Old LNB Bldg Develop District</i>
<i>City Court Technology</i>	<i>Entergy Operations Grant</i>	<i>Library Control Board (millage increase)</i>
<i>Mental Health Facilities</i>	<i>MoveEBR Transportation</i>	<i>Civil Jury Compensation</i>
<i>District Court Off-Duty Officer Witness</i>	<i>Third-Florida Economic Develop</i>	

City-Parish - Spending More Than All Others

LA Metropolitan Cities Budget History

Sources: Websites for each Louisiana City & Phone Calls with City Officials

LA Metropolitan Cities - Operating Budget



Not a list you want to be on: Baton Rouge ranks in top 5 overleveraged US cities

STEPHANIE RIEGEL

OCTOBER 9, 2017 | BUSINESS



BR Has 5th Largest Funding Gap

Source: J P Morgan Report - Sept 2017

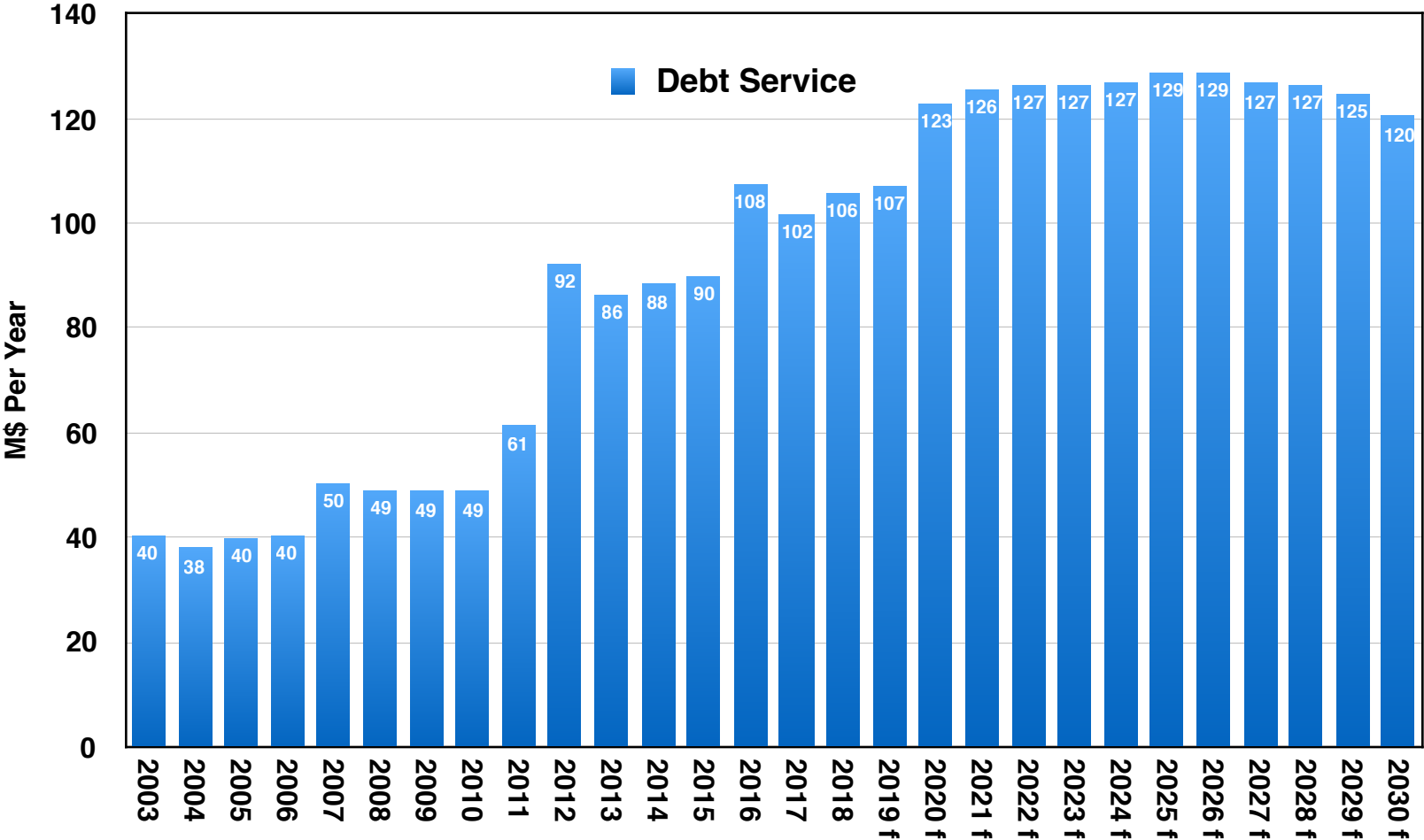
Largest funding gaps				30-year remediation (mut. exclusive)				W/O remediation, req. return on assets		Pension funding ratio		Debt Risk indicator
City	Current IPOD ratio	Norm. IPOD ratio	Funding gap	Tax increase	Cut in direct non-pension spending	Increase in worker contributions	B/E nom. pension return	B/E nom. OPEB return	Current	Est. in 10 yrs w/out remed @ 6% return*		
Chicago	35%	62%	27%	27%	or 14%	or 428%	17.9%	-11.7%	23%	15%	121	
Houston	24%	50%	26%	26%	or 23%	or 772%	10.0%	Con<Serv	66%	58%	86	
Austin	26%	51%	26%	26%	or 28%	or 287%	9.1%	Con<Serv	67%	67%	56	
Dallas	20%	45%	25%	25%	or 30%	or 459%	11.1%	No solution	54%	62%	95	
Baton Rouge	28%	52%	24%	24%	or 20%	or 525%	8.0%	Con<Serv	71%	67%	90	

The choices outlined in the report for Baton Rouge are stark. Over the next 30 years, the city-parish, in a worst-case scenario, will have to either increase taxes by 24%, cut non-pension spending by 20% or increase worker contributions to the system by 525% in order to meet its obligations.

Debt Service Costs Have Tripled

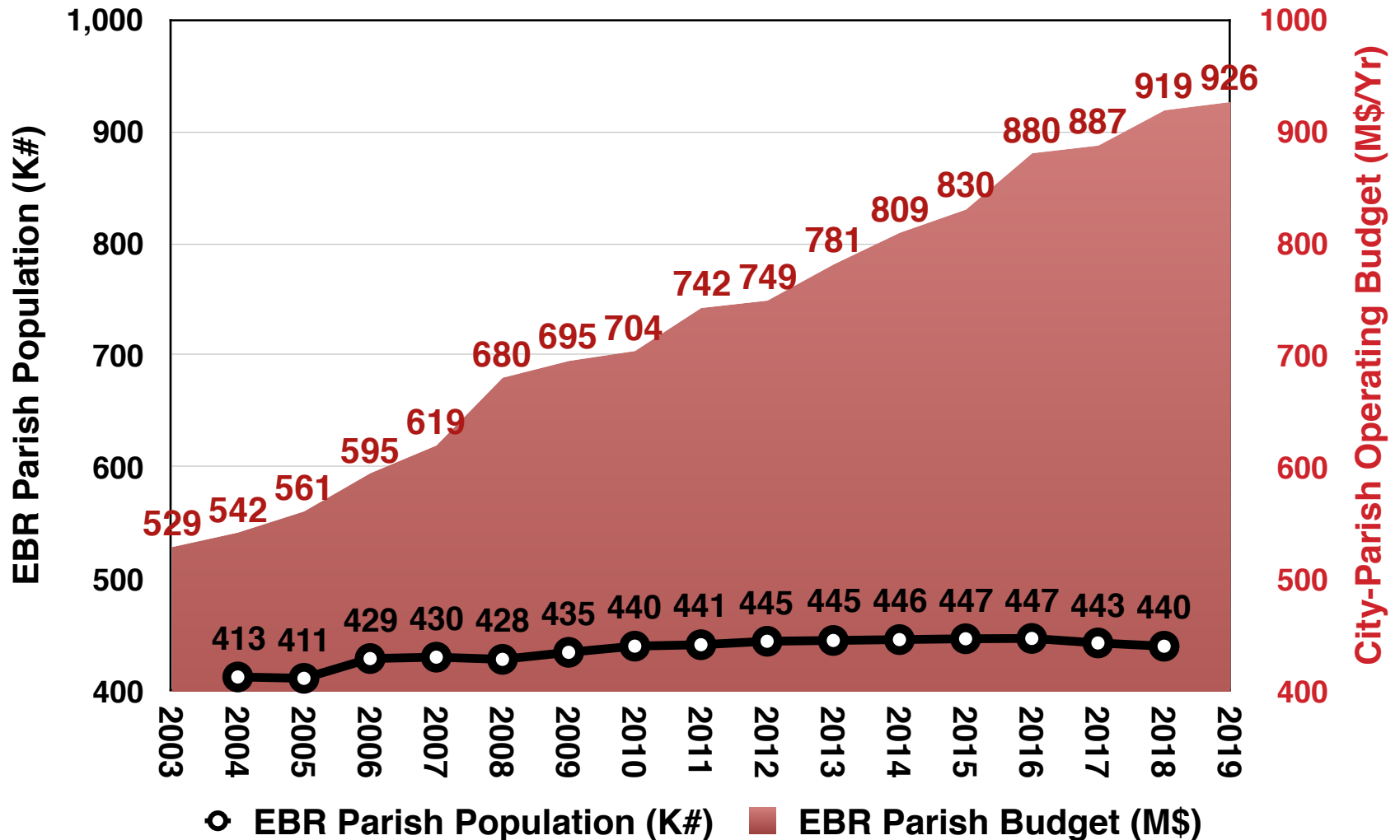
Source: BRgov.com

Expenditures (Actual & Forecast)



City-Parish Spending Is Uncontrolled

Source: BRgov.com





Home › Newsletters › Daily Report AM › Baton Rouge No. 2 for underfunded pension liabilities

WEDNESDAY, APRIL 17, 2019

Baton Rouge No. 2 for underfunded pension liabilities

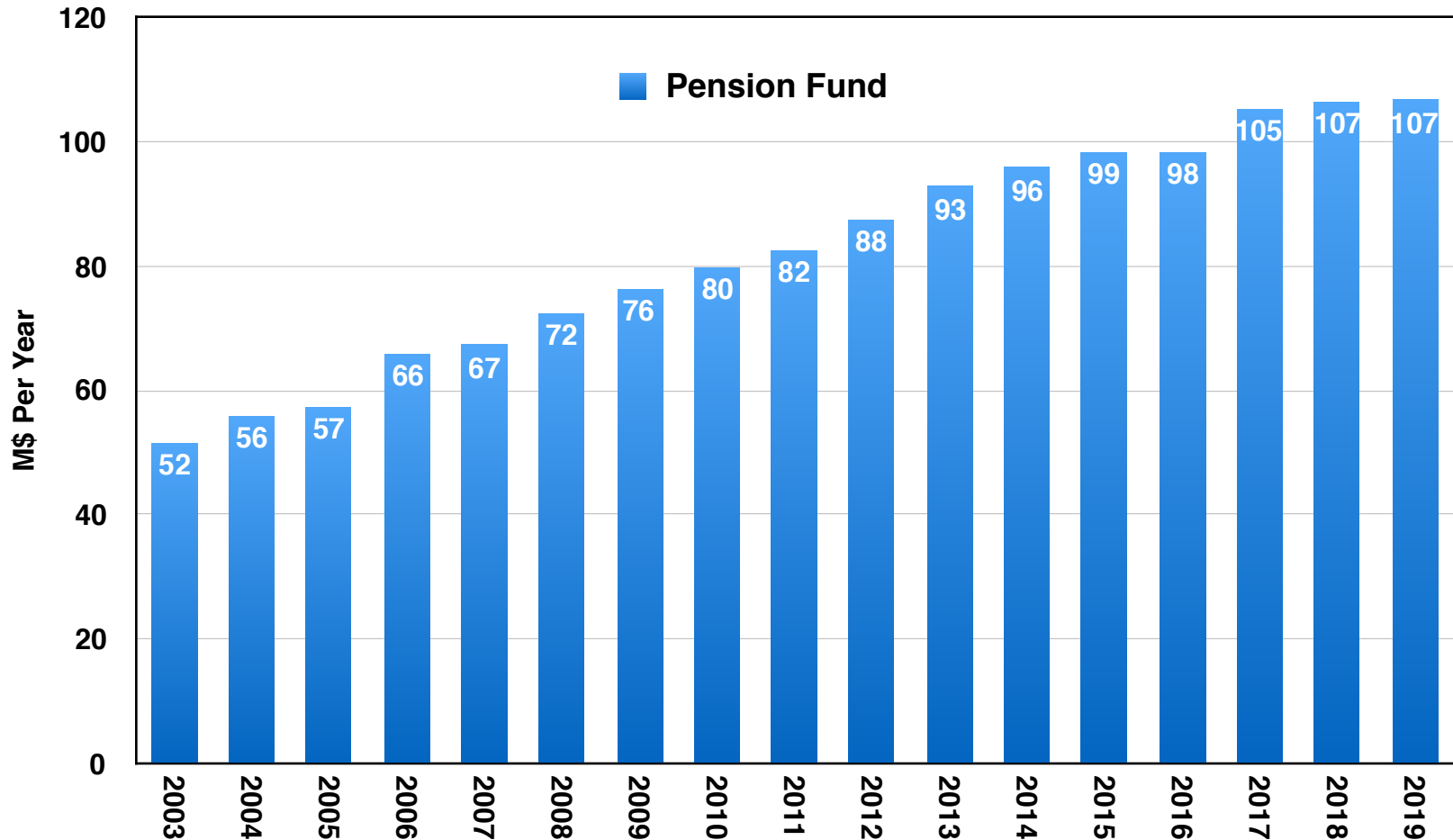
By Daily Report Staff



As of 2016, over 50% of Baton Rouge's revenues were obligated to pay for pensions, but the city-parish only paid roughly half of what was due, [The Wall Street Journal reports](#).

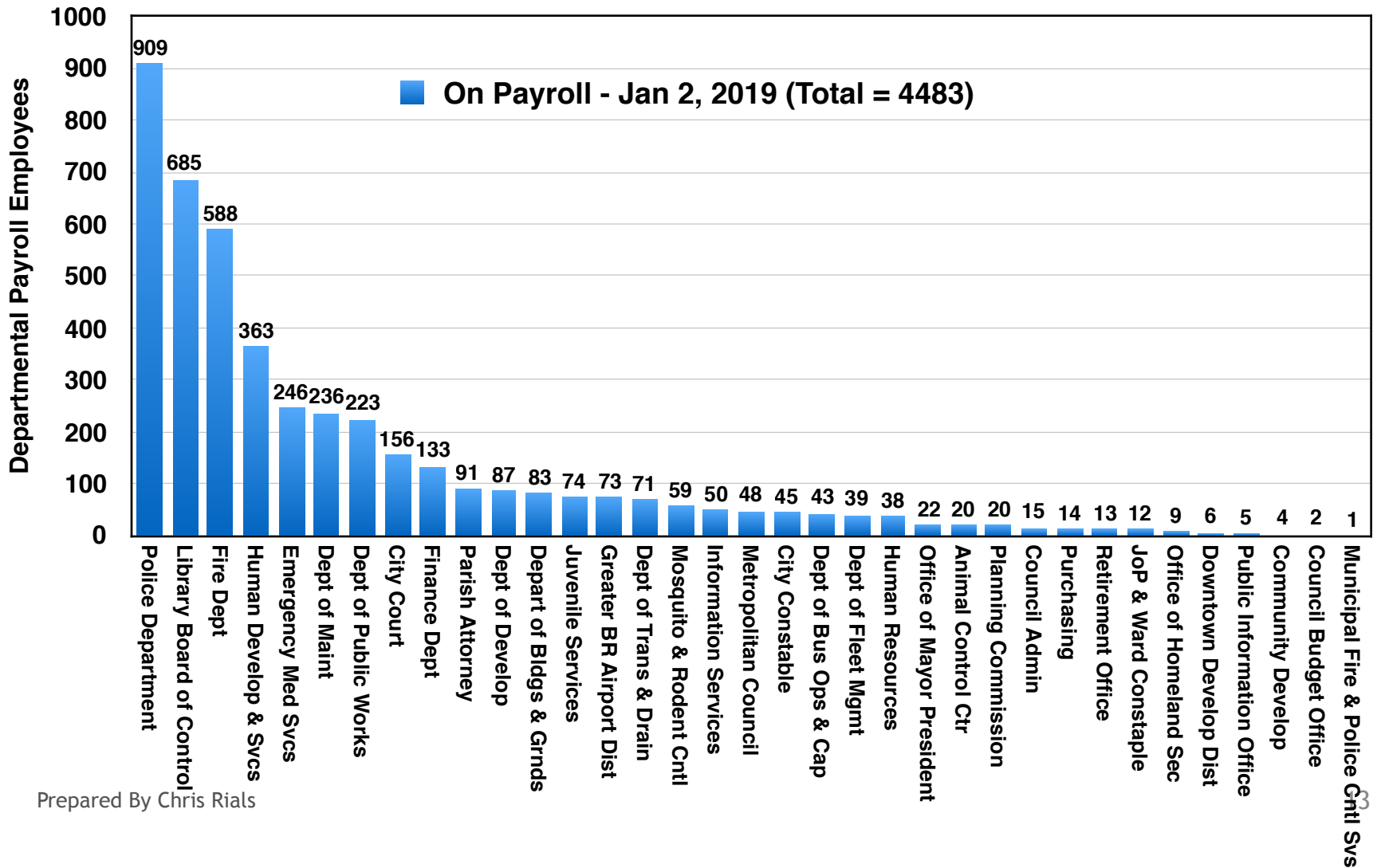
Pension Costs Have Doubled

Source: BRgov.com



Pension Costs Driven By # Employees

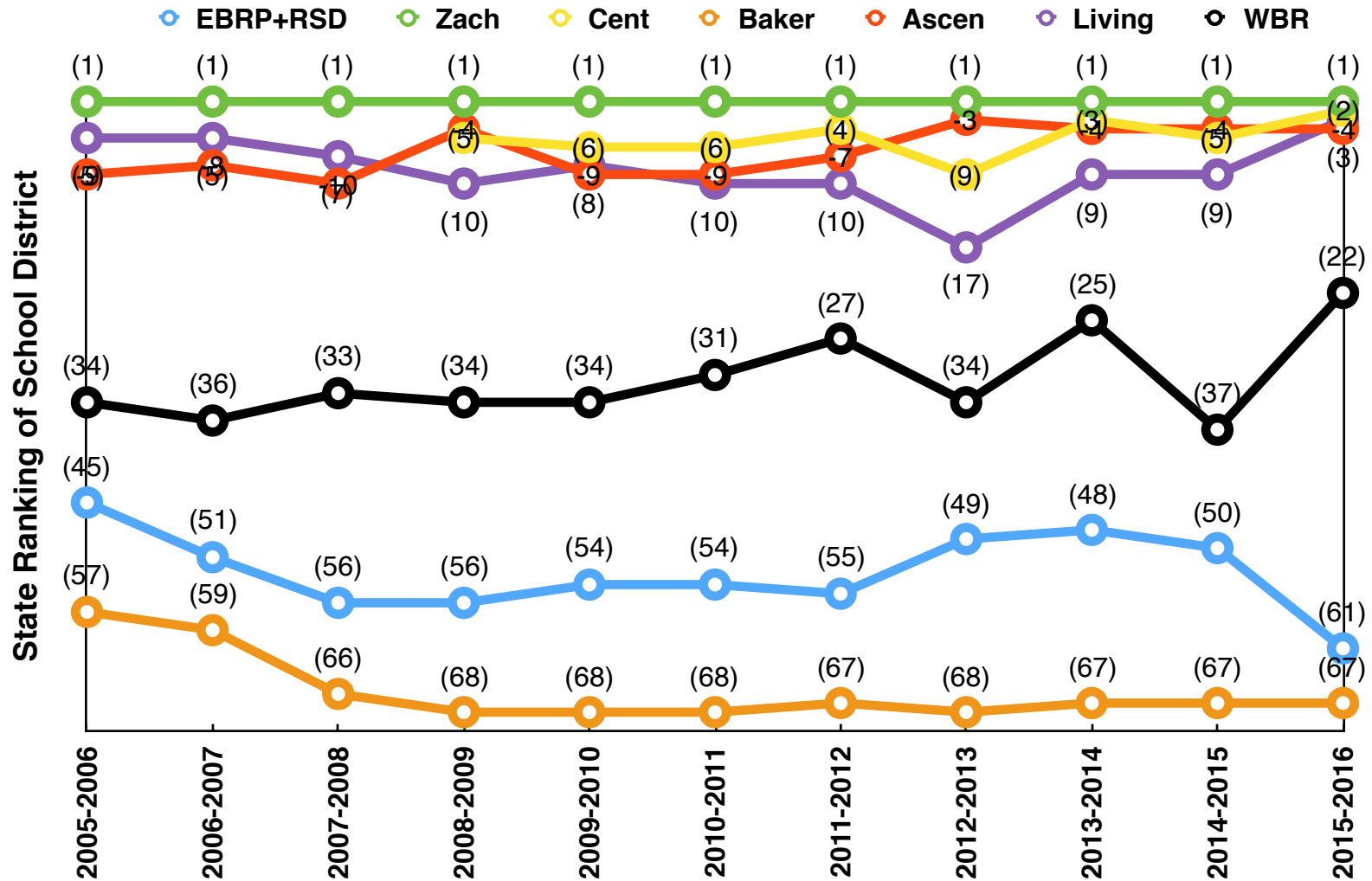
Source: BRgov.com



SCHOOLS

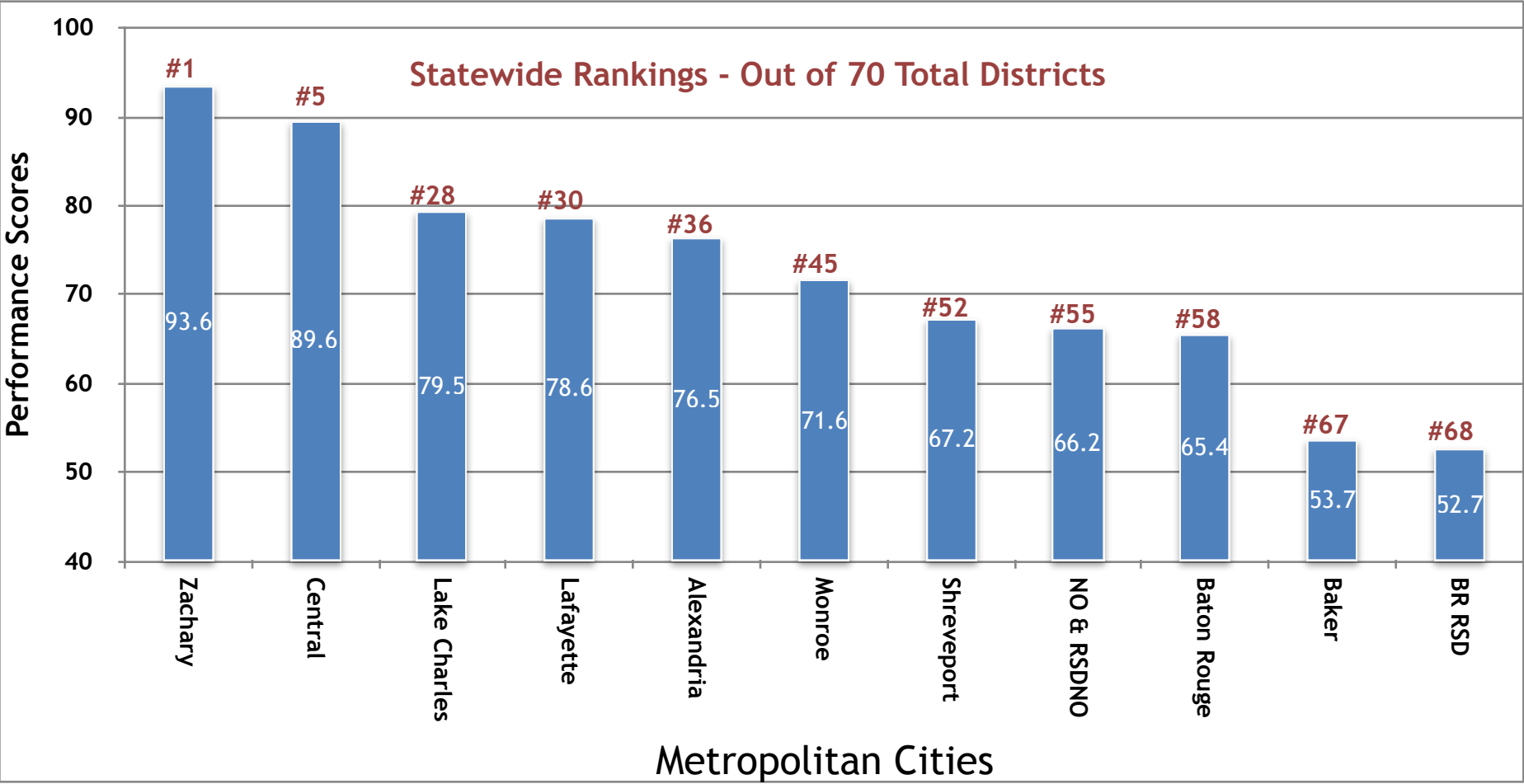
EBRPSS Continues To Fall In Rankings

Source: LOUISIANABELIEVES.COM



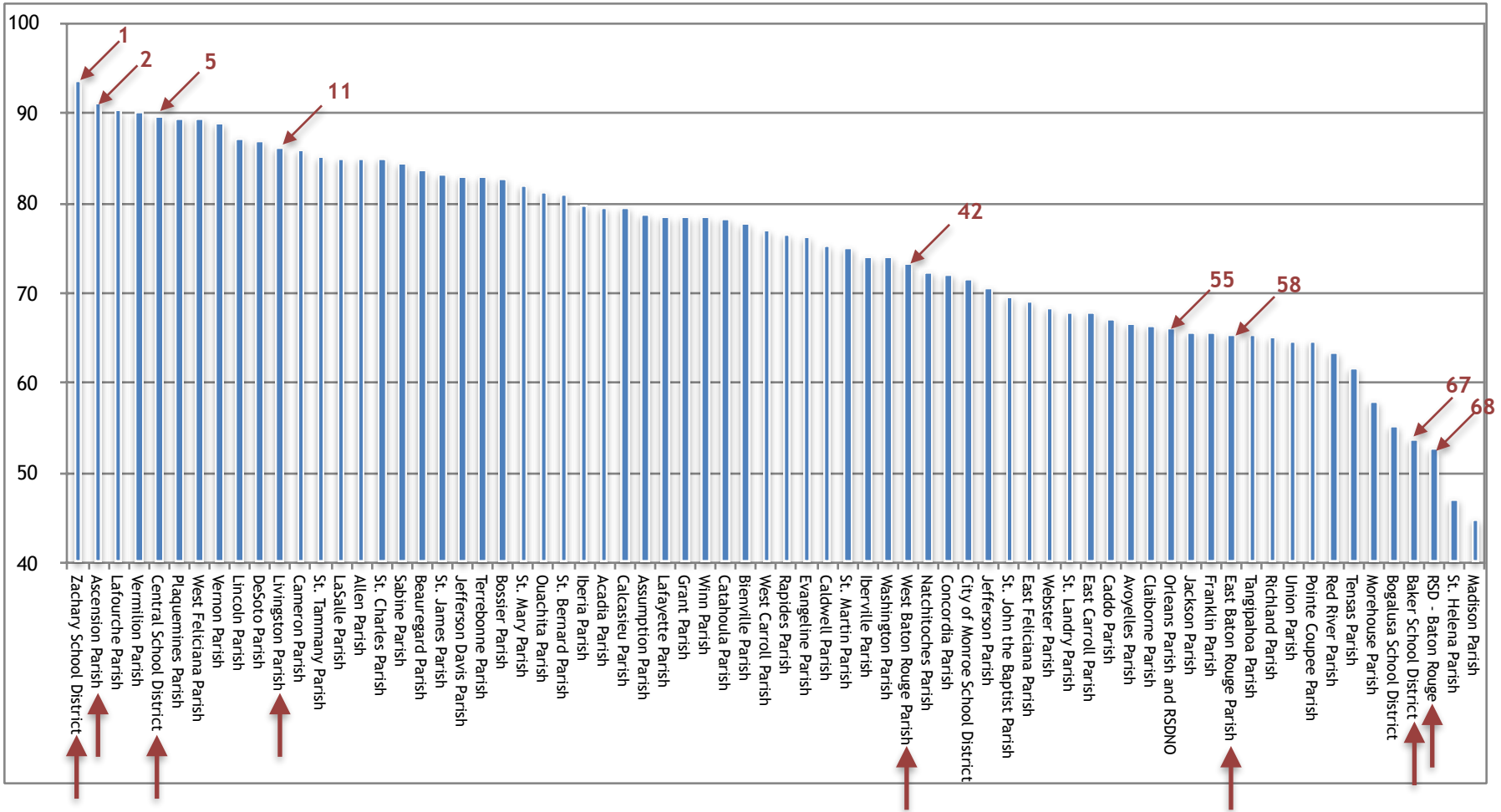
2018 LA School District Scores - New Formula

Source: LouisianaBeleives.Com



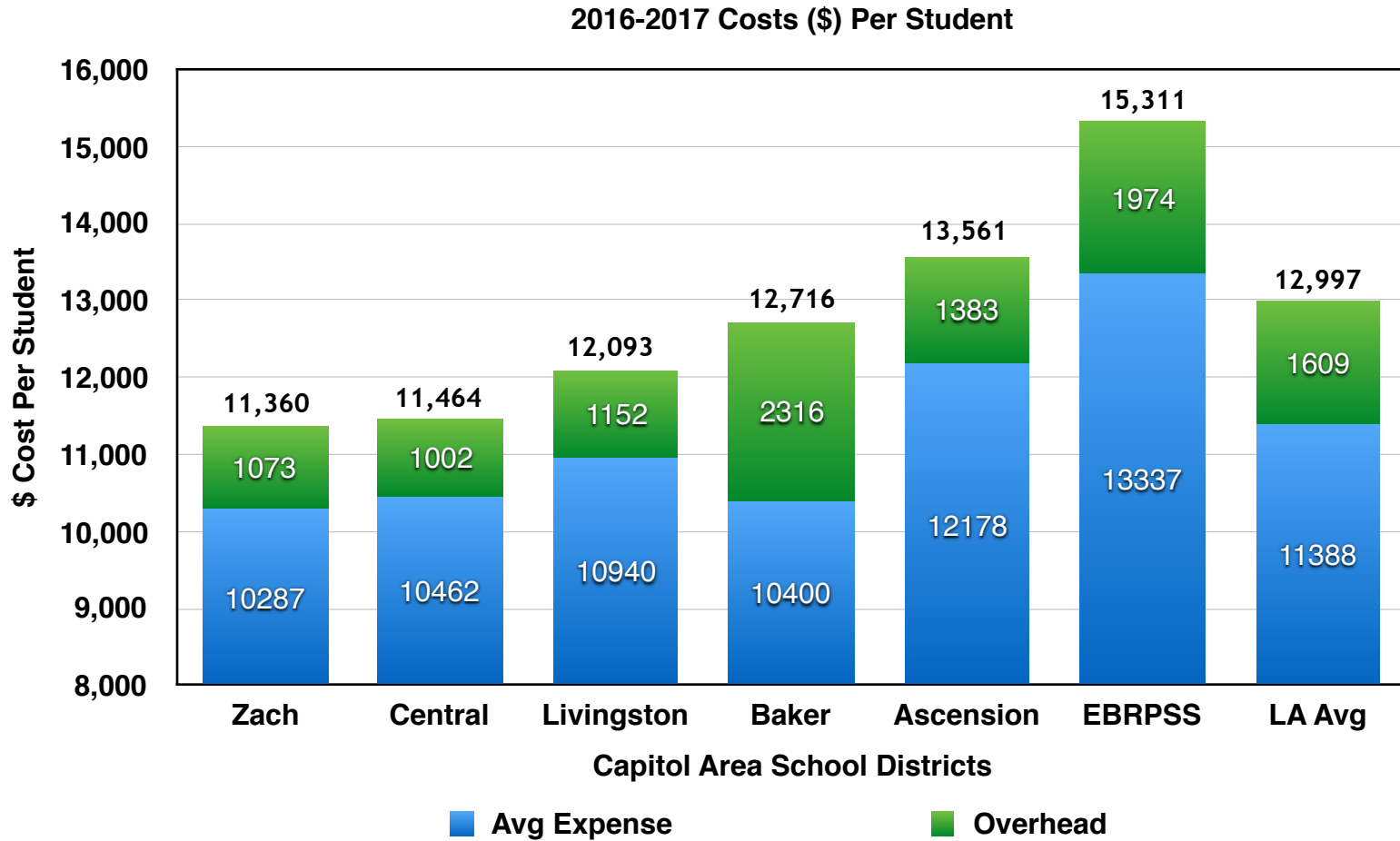
2018 LA School District Scores - New Formula

Source: LouisianaBeleives.Com



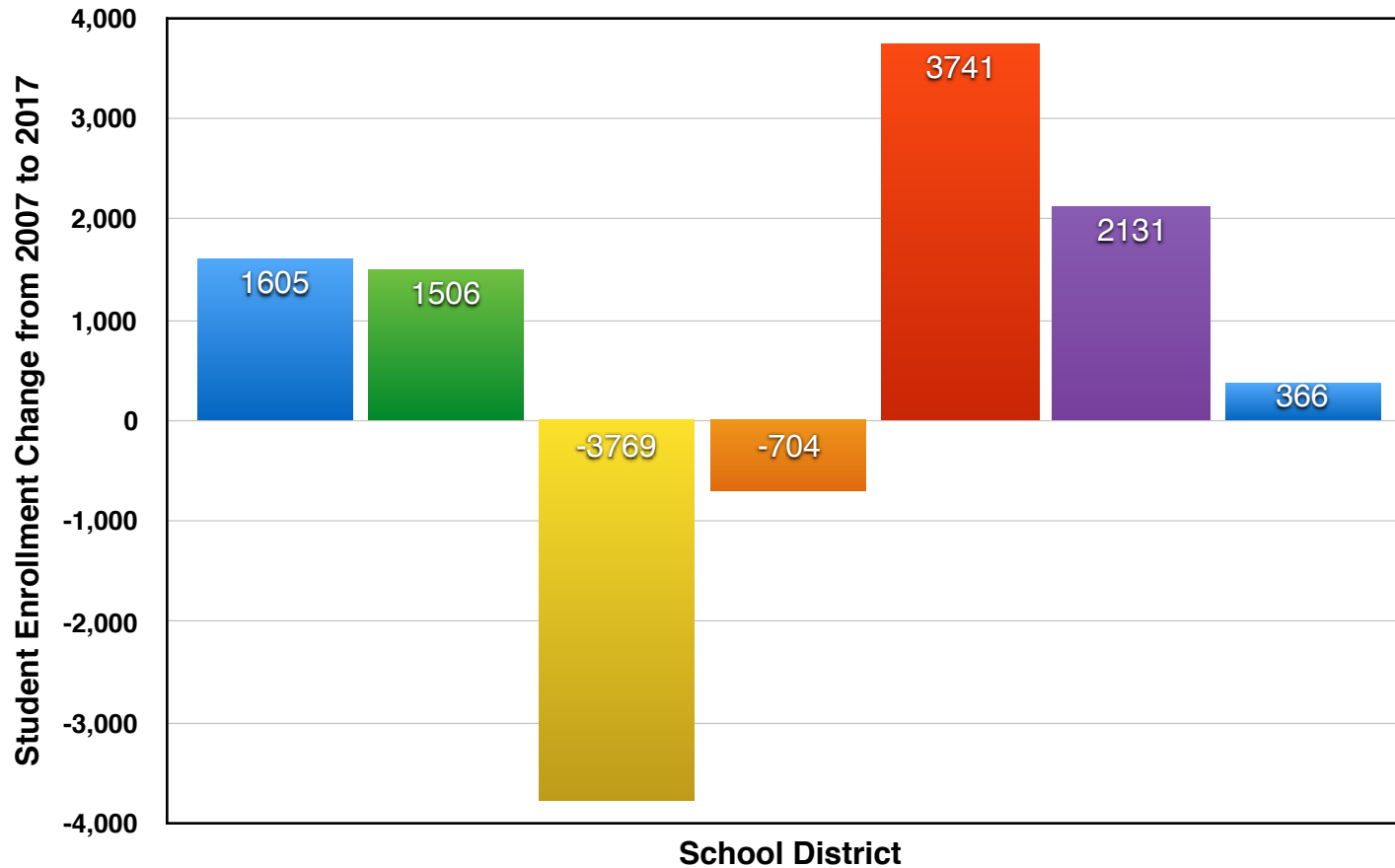
LA Capitol Area School District Costs (2016-2017)

Source: LOUISIANA BELIEVES.COM



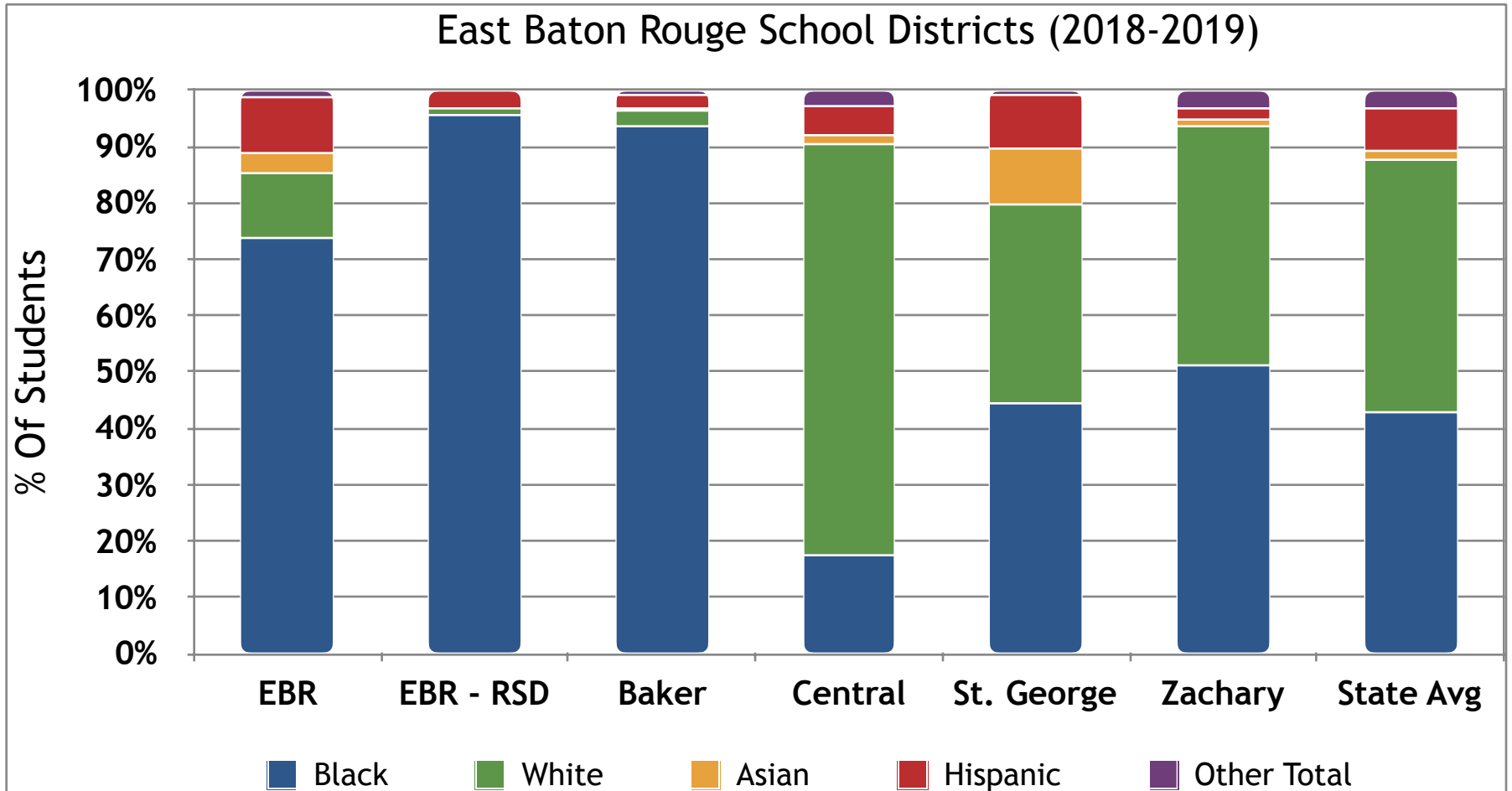
Capitol Area School Districts: Enrollment Change (2007-2017)

Source: LOUISIANABELIEVES.COM



EBR School District Demographics

Source: LouisianaBelieves.com & EBRPSS



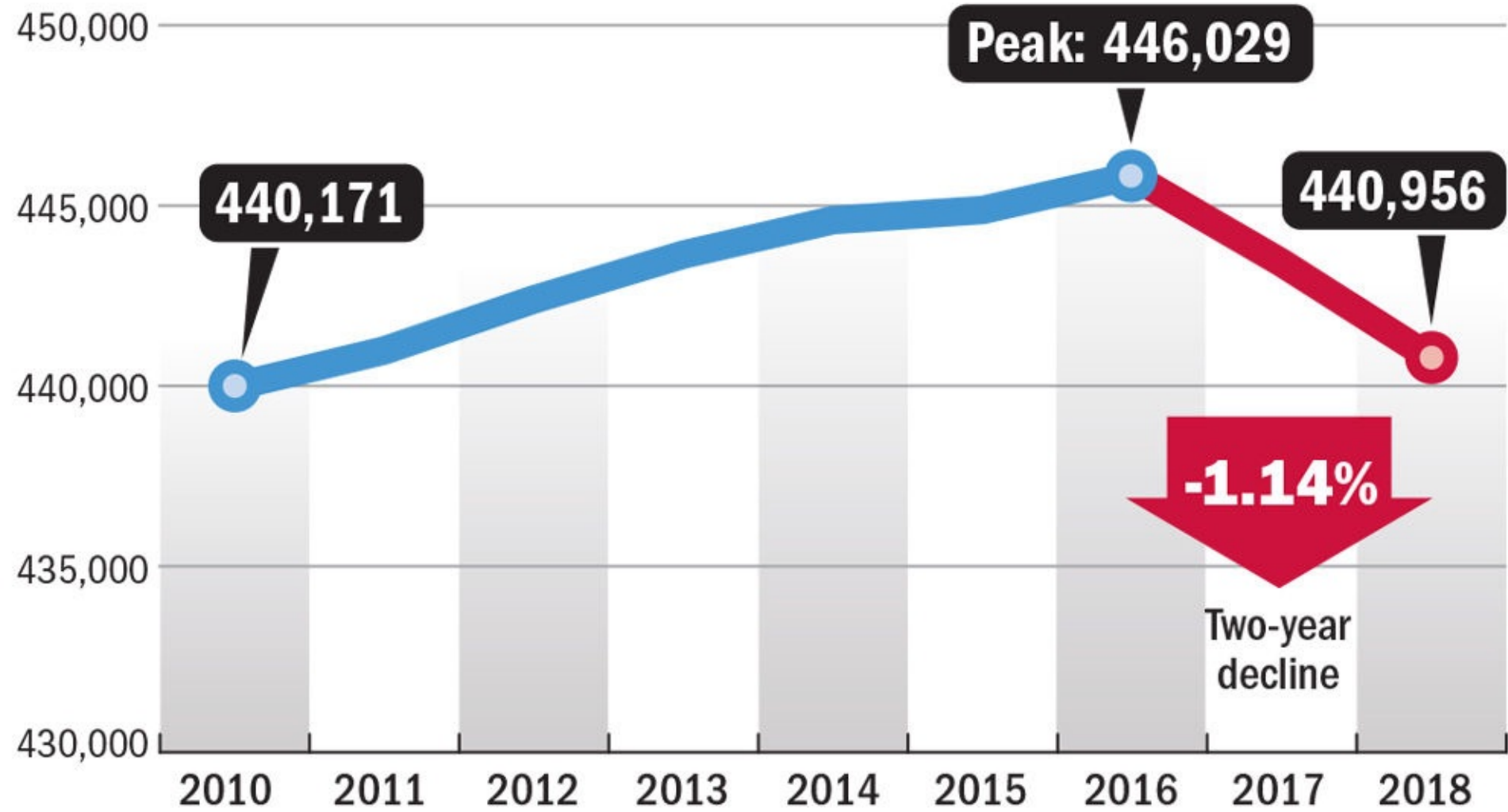
StG Community School District Finances

Source: BRAC, City Administration, EBRPSS

REVENUE SOURCE	M\$	
2 Ct Sales Tax	42	
Ad Valorem Tax	36	
MFP	16	
TOTAL	94	
# STG Students Attend EBRPSS	5,237	10,000
\$/Student (W/O MFP)	\$14.9	\$7.8
\$/Student (Wtih MFP)	\$17.9	\$10.8

UNPRECEDENTED EXODUS

EAST BATON ROUGE PARISH POPULATION



Source: U.S. Census Bureau • All years except 2010 are estimates

Advocate graphic

EBR Parish - 2030 Forecast

- **Less residents: falls from 440K to 416-428K**

EXHIBIT 13

East Baton Rouge Parish General Population Projections 2010-2030			
Year	Projected Population Low Range	Projected Population Mid Range	Projected Population High Range
2010	412,060	433,700	455,420
2015	414,790	429,170	442,630
2020	416,400	426,380	436,690
2025	416,930	424,110	432,100
2030	416,000	421,500	428,450

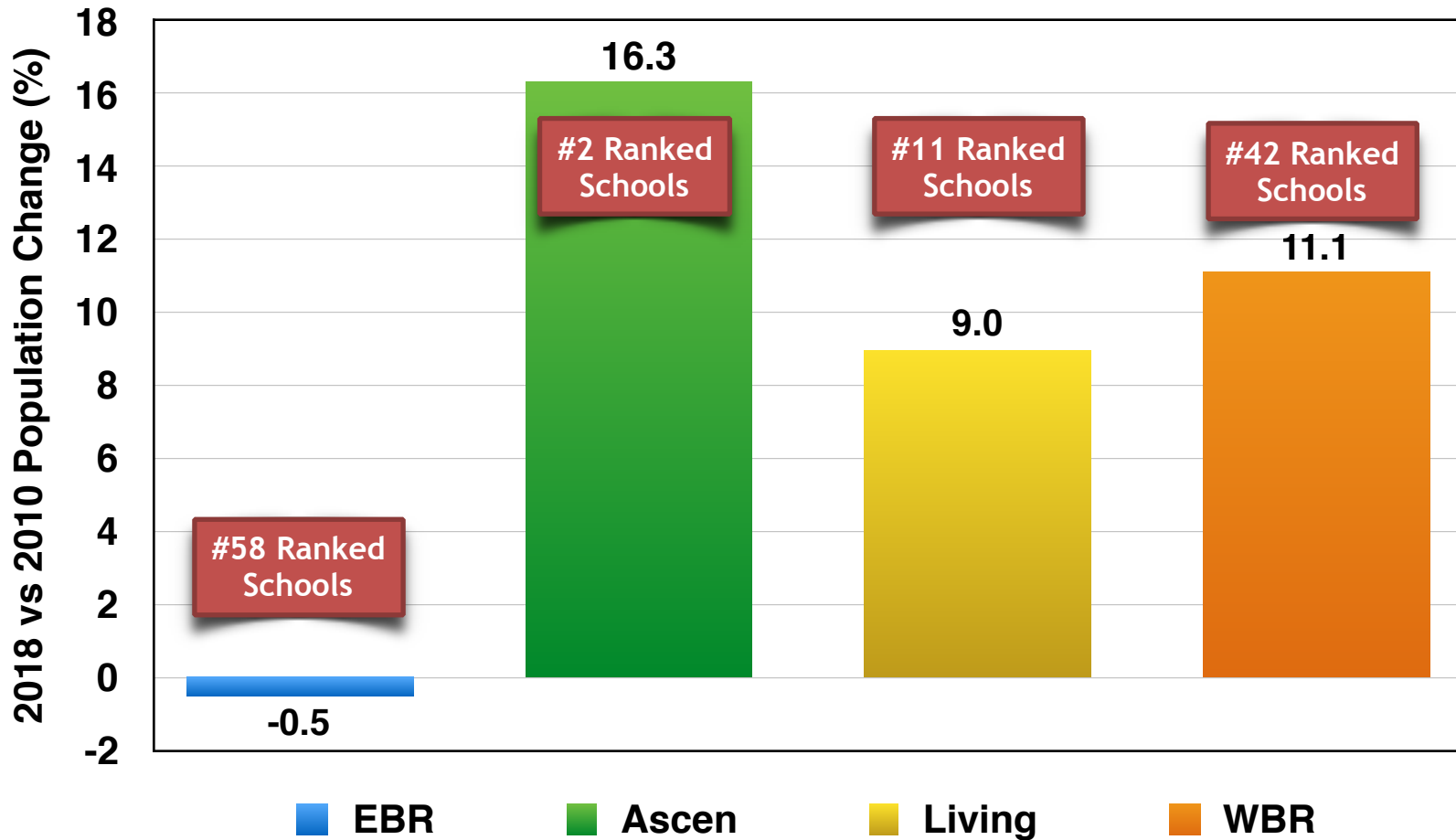
Source: U.S. Census Bureau, Louisiana.gov
East Baton Rouge 2010 Census Count: 440,171

- **More school closures: 4 have closed since 2016**
- **More tax increases: > 24% from 2018 base**

Capitol Area Population Trends - If Zero Growth in Central & Zachary

Source: CENSUS.GOV

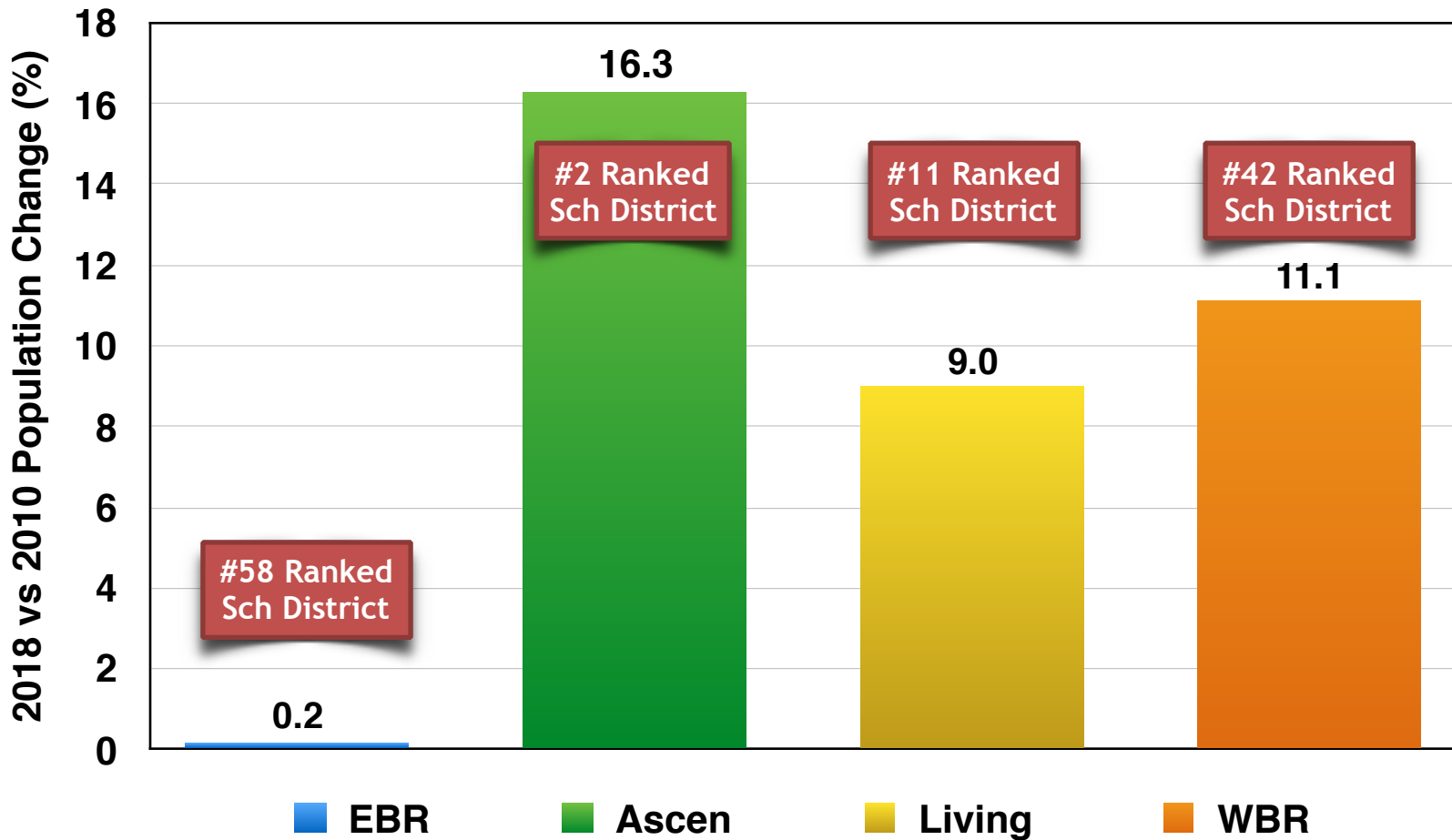
Area Population Growth (%) - 2018 vs 2010



Capitol Area Population Trends

Source: CENSUS.GOV

Area Population Growth (%) - 2018 vs 2010



In first study of its kind, highly rated Ascension schools have major impact on parish's growth



BY ELLYN COUVILLION | ECOUVILLION@THEADVOCATE.COM APR 24, 2019 - 8:22 PM



LIKE US ON
FACEBOOK



FOLLOW US



The researchers, using figures from the U.S. Census and other sources, found that 11.5% of parish residents, representing 5,100 households, moved to Ascension because of its outstanding public school system. That percentage of population growth brings its own economic output: \$196 million annually in goods and services produced, in the form of business growth or new business.

Other highlights of the study show that:

- The school district annually pays \$251 million in salary and labor costs that include pay for its employees, vendors and contractors. That figure translates into \$421 million in economic output, the value of goods and services produced in the parish, whether it's a grocery store adding employees because business is good or a contractor buying supplies for a work project for the school district.
- For parents surveyed, who have children in the public schools, the school district was their highest ranked reason to live in Ascension Parish.

'Difficult process' begins at some East Baton Rouge schools where job cuts are possible

BY CHARLES LUSSIER | CLUSSIERS@THEADVOCATE.COM APR 27, 2019 - 4:09 PM



FOLLOW



Changes in student enrollment largely determine how many employees get impact letters, and enrollment at many schools in Baton Rouge has declined. For instance, McKinley High still has about 1,150 students, but its enrollment is down from its 2015 peak of more than 1,400 students.

Layoffs may be coming as well to McKinley High and other schools as the school district tries to find \$20 million to \$30 million in savings in advance of the 2019-20 fiscal year, which starts July 1. Any layoffs, however, wouldn't start until May 26 at the earliest.

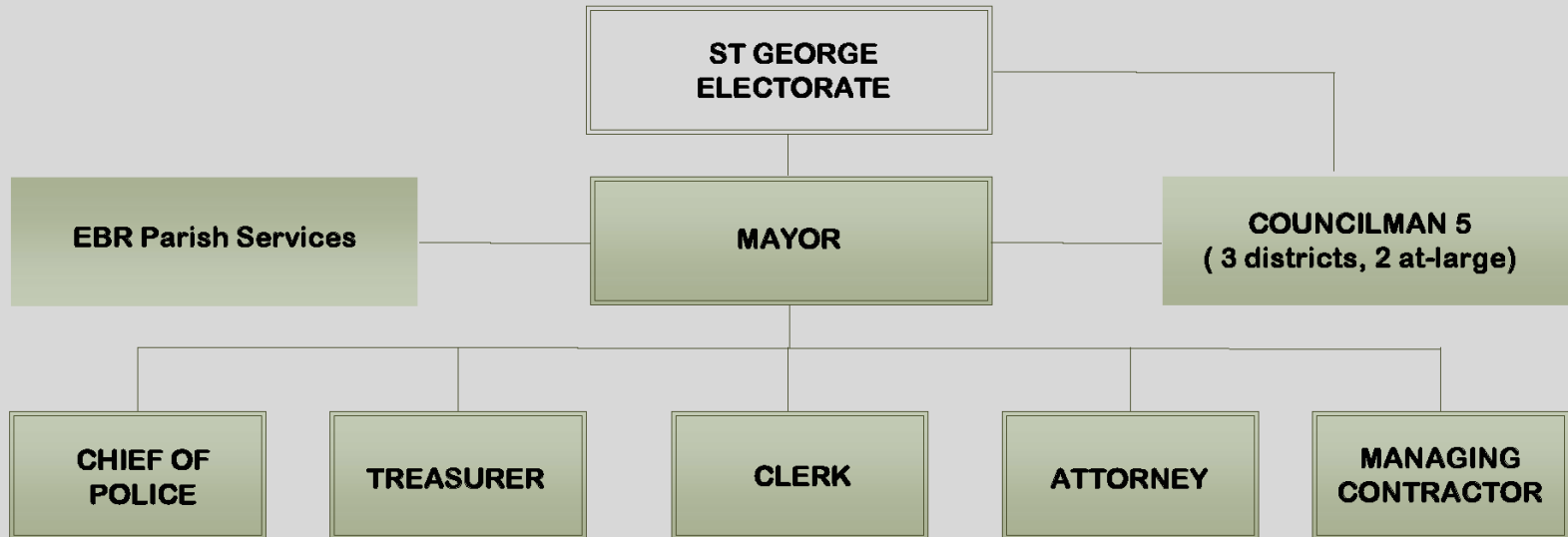
CITY OF ST. GEORGE

21st Century Model – Sandy Springs, GA

- 100,000 population (2005 incorp)
- Public-Private Partnership
- Cost of civil services cut in half
- Surplus Operating Budget
- Improved roads & parks
- Model duplicated across GA



CITY OF ST GEORGE GOVERNANCE MODEL



CITY OF ST GEORGE GOVERNANCE MODEL

**EBR PARISH SERVICES
TO ST GEORGE**

**EBRPSO
CRIMINAL, CIVIL**

19TH JDC

DWP - SEWAGE

EMS

**GARBAGE
COLLECTION**

BREC

**LIBRARY
CONTROL**

**MOSQUITO
CONTROL**

**ANIMAL
CONTROL**

**ALCOHOL
BEVERAGE
CONTROL**

**ST GEORGE
FIRE
PROTECTION**

**EAST SIDE
FIRE
PROTECTION**

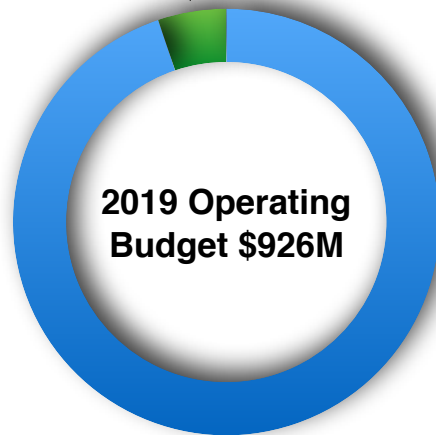
City of St. George Operating Budget

	<i>CRI</i>	<i>Revised Using City-Parish Est</i>
<i>Revenues</i>	58	48
<i>Expenses</i>	34	34
<i>Surplus</i>	24	14
<i>Budget Basis</i>	<i>4Q17 Estimate Using '16 Data</i>	<i>Revenue Based on Richardson Report</i>

EBR Parish's Fuzzy Math: 5% is not 18%

“The Metro Council said ... the government agencies it operates would need to cut at least 18% from their budgets to make ends meet.” - The Advocate May 9, 2019

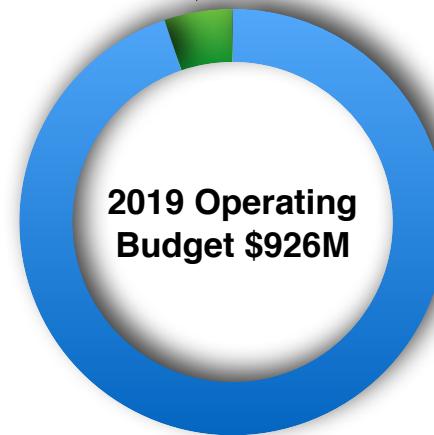
St. George:
5%



2019 Operating
Budget \$926M

City-Parish:
95%

St. George:
48



2019 Operating
Budget \$926M

City-Parish:
878

City of St. George Impact on EBR Parish

<i>Governance Attributes</i>	<i>City & Parish Budgets</i>	<i>Businesses</i>	<i>Future Schools</i>
<i>Public-Private Partnership will be responsive</i>	<i>Reduce cost of services for StG residents</i>	<i>Reduce future tax demands</i>	<i>Most diverse demographics in the state</i>
<i>Share Best Practices with municipalities</i>	<i>No LT StG pension liabilities, reduce Parish liabilities</i>	<i>Attract and retain talent & residents</i>	<i>Compete with surrounding school districts</i>
<i>Performance metrics will be stewarded</i>	<i>More residents = more tax revenues</i>	<i>Increased business opportunities</i>	<i>Focus on trade & college career opportunities</i>